

5280

Home

SUMMER 2013

A SUPPLEMENT TO 5280 MAGAZINE

CHIC CITY LIVING

Inspiring Ideas For Creating The
Ultimate Urban Home



**QUICK, EASY TIPS FOR
SUMMER ENTERTAINING**

PAGE 40

**4 PERFECT
BATHROOM MAKEOVERS**

PAGE 82

**THE CREATIVE DUO
BEHIND NEWELL DESIGN**

PAGE 46

2 Breathing Room

An architect uses the Front Range foothills as inspiration.

A TRIP TO THE MASTER BATHROOM in this Boulder house, which sits on the threshold between the city and the prairie, feels like a visit to a spa. Architecture firm Arch11 conceptualized the space to blend the natural beauty of the outdoors with the clean, simple lines of modern interiors. "It's very much about connecting to the landscape," says architect Ken Andrews. "A lot of people take it for granted that a bathroom is just about taking a shower. We like to think of it as a pause in your day."

A | BRING THE OUTSIDE IN

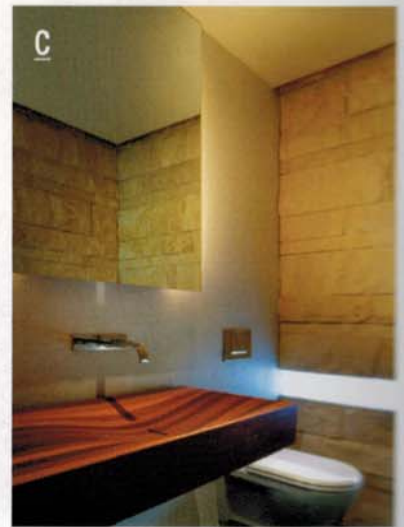
From the two-person Agape soaking tub, there's a perfect view of Boulder's Bear Peak. "We call the house a 'viewfinder' because it reveals the surroundings," Andrews says.

B | SOFTEN THE VIBE

Instead of pure white surfaces, the Arch11 team chose natural materials such as soapstone countertops from Dorado Soapstone in Denver, Bianco Venatino marble flooring from Arizona Walker Zanger, which "bounces light around," Andrews says. "There's a very welcoming, cleansing quality to the room. You never feel like it's stark."

C | PERSONALIZE IT

The flooring near the tub and the custom sink are built out of jarrah, a sustainable Australian eucalyptus wood that handles moisture well. (It's so durable that it's often used on yachts.) The owner, who is from Australia, wanted to incorporate a piece of his native home in the new house.



D | LIGHT THE WAY

The subtle ambience of the pendant lights, which add a subdued glow at night, is carried throughout the house for consistency. "They read more like candles at night," Andrews says.



A

D

C

**DESIGN
NOTES**

**DESIGN AND
ARCHITECTURE:**
E. J. Meade,
principal; Ken
Andrews, proj-
ect manager;
Claire Jordan,
interior de-
signer; Arch11,
303-546-
6868, arch11.
com

CONTRACTOR:
Hammerwell
Incorporated,
303-443-
3430, ham-
merwell.com